

Animal Ready Communities (ARCs)

Community-based best practice in animal emergency management

RSPCA Animal Welfare Seminar 2022

Dr Mel Taylor

Honorary Associate Professor / Macquarie University
Partner / Enduring Advantage Consulting



Introduction

Social scientist (psychology)

Research/activities

- BNHCRC – ‘Managing Animals in Disasters’
- World Animal Protection – NPPAD study
- Post-bushfire interviews with NSW RFS
- Scoping national handbook on animals in disasters for AIDR
- Community-led work in the Blue Mountains

Philosophy

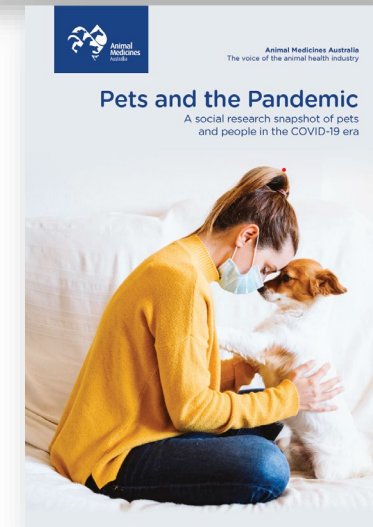
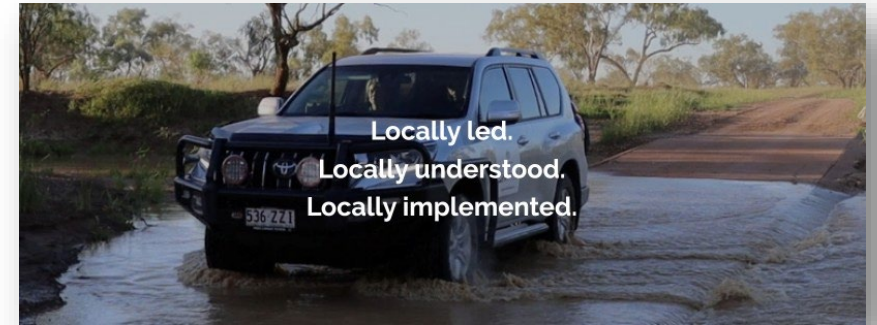
- ‘One Welfare’ (One Health)



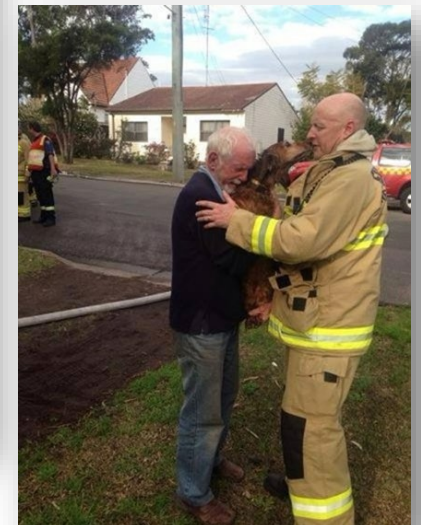
Why do we need community involvement?

Policy, Operational and 'extrinsic' drivers (push)

- Protecting 'what the community values'
 - shared responsibility
- Ownership levels
 - capacity and resourcing
 - increasing, worsening, compounding disasters (climate change)
- Animals as property
- Your animal, your responsibility
- Primacy of human life
 - role conflict, public expectations/acceptance



Animal Medicines Australia, 2021



Why does community want to be involved?

Human, 'intrinsic' drivers (pull)

- Human-Animal bond
 - care, compassion, love, livelihoods – 'family'
 - responsibility – own/others/no ones
 - impacts on behaviour – failure to evacuate, leaving late, rescues, returning
- People want to do 'something'
 - agency, self-determination, empowerment
 - 'fill the vacuum'
- Local knowledge, expertise, connection/s
 - capability, capacity, longer term investment



Barriers to community involvement

- Complexity of emergency management system
 - even more so for animals – roles and responsibilities
 - ‘You don’t know what you don’t know’ – easy to make mistakes
- Public safety concerns
 - some phases/activities more problematic
- Issues for informal (spontaneous) volunteers
 - lack of integration, inclusion, legitimacy
 - communication, coordination
 - confusion, duplication of effort, frustration, ‘personalities’

“...Government needs to recognise that that [community involvement in animal emergency management] will happen and facilitate it, or allow it, or support that kind of community resilience - that community drive to help themselves”. (Sampson Flat bushfire – SA 2015)



FAWNA – WA response 2016 – NARGA Disaster Response Team
Facebook page



Challenges for community approaches

- Volunteering
 - fatigue/burnout, demographics, commitment, competing demands
- Oversight/support
 - issues if lacking an overarching organisation or facilitation
 - longevity, succession
 - Rol - training, time investment
 - consistency, patchwork, evaluation
- Engagement without experience of disaster
- Timelines
 - community development



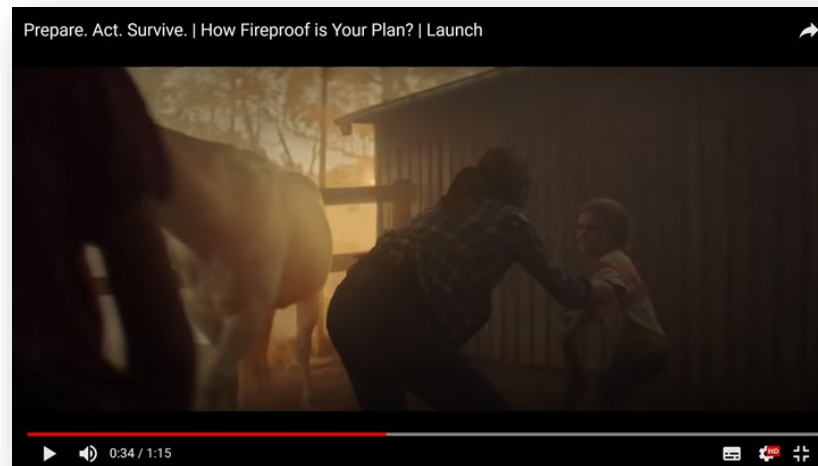
What can we do about (all) this?

- Raise awareness of the need to consider animals
 - community and emergency service organisations
 - improving - but still pockets of denial!
 - better understanding of the limitations of 'Response' and the expectation of responsibility
- Engage and enable communities
 - examples/case studies
 - resources
 - find pathways and link/connect groups/people
- Leverage existing networks and consider alternative approaches/models
 - integrated vs standalone approaches



Animal Ready Community - case studies

- Blue ARC – Blue Mountains Animal Ready Community
- Hawkesbury-Nepean Valley ARC working group
- Both leverage human-animal bond to motivate animal emergency preparedness



How Fireproof is your plan? NSW RFS 2018.

For their sake...
Know your bushfire risk...
and make a plan for all your family.

For more information visit www.cfs.sa.gov.au
Bushfire Information Hotline 1300 362 361 (TTY 133 677)

Government of South Australia
PREPARE, ACT, SURVIVE.
FIRE
CFS

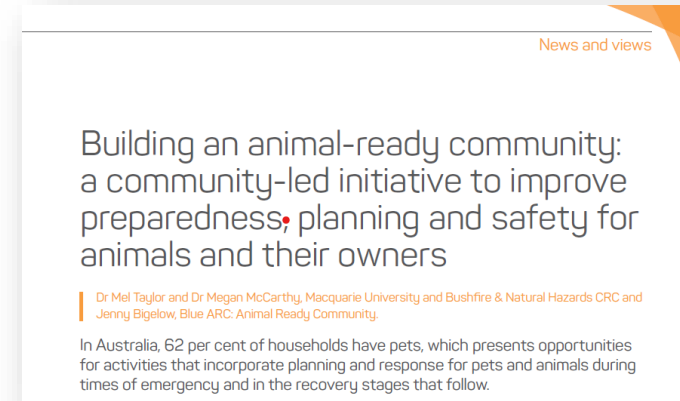
The advertisement features a close-up of a horse's eye, which reflects a fire scene. The text is in white on a black background. At the bottom, there are logos for the Government of South Australia, the slogan "PREPARE, ACT, SURVIVE.", and the Fire and Emergency Services (FES) logo.

Blue ARC – Animal Ready Community

- Community-led group in the Blue Mountains

The aim of Blue ARC is to support community resilience in emergency events through better awareness, preparedness, planning and response for companion animals, livestock, and native wildlife.

- Developed resources, training, run social media page, connect with official emergency management structures through Resilience and Preparedness Working Group



*Australian Journal of Emergency Management,
Vol32(4) October 2017*



*NSW Resilient Australia Awards 2018
Highly Commended – Community Award*

“I was one of the long distance commuters sent home early on the day of the October 2013 fires.

We looked in horror at the amount of smoke outside the train windows and felt powerless as we shuffled along.

There was one young woman on the phone desperately trying find someone to get her horses in Winmalee to safety.

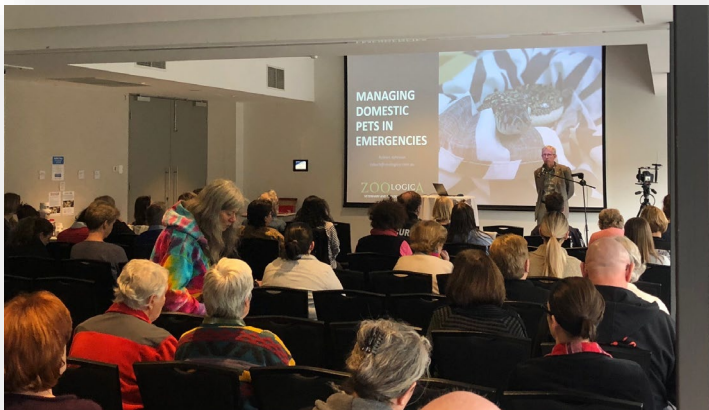
It was heart wrenching to listen to as were all the other calls.

The pets of long distance commuters are particularly vulnerable in this situation and it would be good to offer some sort of support for them. ”



Blue ARC strategy

1. Keep it manageable
2. Be inclusive – partner
3. Don't reinvent
4. Support the 'system'
5. Keep it real(istic)
6. Keep it (locally) relevant
7. Not an animal rescue group!



Your voice, their lives.



**Animals in Emergencies Survey
Blue Mountains & surrounding areas**

Community emergency preparedness & planning for animals.
Issues from previous emergencies. Local needs and gaps.
Help give animals a voice by filling in the survey.

Complete the survey online at
www.surveymonkey.com/t/animals-in-emergencies-survey

Request a printed copy from
The Turning Page Bookshop, Springwood Ph: 02 4751 5171 or
Blue ARC: www.facebook.com/BlueMountainsARC/ Blue_ARC@yahoo.com

For all other enquiries contact:
Mel Taylor, Bushfire & Natural Hazards CRC – mel.taylor@mq.edu.au



Blue ARC outputs



Are you ready?
Make a plan for ALL your family

Keeping Your Animals Safe in an Emergency
 in the Blue Mountains region




Keeping your horse safe in an emergency

Evacuation Kit for Horses*

- Feed for at least 3 days, including any special dietary needs
- Water, minimum 5-10L/horse for evacuation (average requirement is 30-50L/day)
- Halters, leads, rug and other required saddlery
- Medications & applicators

Photographs
 Blankets (burn/ember protection)
 Sharp knife
 Disasters Fact Sheet




BLUE ARC ANIMAL READY COMMUNITY

Blue ARC Animal Ready Community is a Blue Mountains based group which aims to improve community awareness of the need for companion animals, livestock and native wildlife to be included in local emergency preparedness, planning and response.

Kennels & Catteries
 It is important to contact kennels, catteries & vet clinics well before the time you may need them to discuss vaccination requirements, boarding fees etc.
 All cats and dogs housed in boarding facilities must have been vaccinated in the previous 12 months. It is important they are fully vaccinated well ahead of the boarding period.

What to take with you:

- Proof of vaccination
- Information about any health or behavioural issues your animals may have.
- Medication to be administered and details of the dose, frequency and name of medication. If your animals are on long term medication, make sure to bring along extra just in case.
- Contact details of your vet
- Food, if on a special diet.

Boarding for Animals in the Blue Mountains & Surrounding Areas

To contact Blue ARC:
 facebook.com/groups/7045349658940536
 jennybigelow@yahoo.com.au

This publication contains general information only and should not be construed as advice. It does not take into account individual circumstances. Blue ARC cannot accept responsibility or endorse any of the facilities named for the use of its members. Whilst we try to ensure the accuracy of the information we accept no responsibility for the accuracy or content of the information. You should do your own research when seeking accommodation for your pet(s). Please refer to the information on our website. Blue ARC excludes the nearest liability permitted by law for any loss or damage arising out of the use of this information.




PLANNING FOR ANIMALS IN EMERGENCIES SEMINAR

MAKE A PLAN. PREPARE A KIT. BE INFORMED.

SATURDAY, OCTOBER 6TH
SPRINGWOOD SPORTS CLUB, 83 MACQUARIE RD, SPRINGWOOD
OPENS AT 9.30AM FOR A 10AM START

PROGRAM*

10 - 10.50am	Household & Property Preparedness Michael Biber, SES; representatives from RFS & Red Cross
10.50 - 11.00am	Morning tea
11.10 - 12pm	Managing Domestic Pets in Emergencies Dr Robert Johnson, South Penrith Vet Clinic; representative from DPI
12 - 12.30pm	Assisting Injured & Displaced Wildlife Greg Keightley, wildlife carer
12.30 - 1pm	Lunch break
1 - 1.30pm	Emergency First Aid for Domestic Pets Caroline Outred, VN, Richmond TAFE
1.30 - 3pm	Managing Large Animals in Emergencies Dr Christine Smith, Agnes Banks Equine Clinic; Misty Stebbing, Equine Disaster Coordinator; representative from RFS

*Program may be subject to change

COST: gold coin donation
 Come for the day, or drop in for individual sessions. Morning tea provided. Lunch can be purchased at the club.

TO REGISTER OR MAKE ENQUIRIES, PLEASE CONTACT:
Blue ARC
 Facebook: search Blue ARC;
 Email: jennybigelow@yahoo.com.au
Winmalee Neighbourhood Centre
 Ph: (02) 4754 4050
 Early registrations would be appreciated for numbers.

PROUDLY BROUGHT TO YOU BY:



Blue ARC Facebook



Hawkesbury-Nepean Animal Ready Community (H-NV ARC)

- Funded by the Hawkesbury-Nepean Valley Flood Risk Management Strategy
- Working group - INSW-led, with support from NSW SES, NSW DPI, GS LLS, BNHCRC, Local Equine Veterinarian, Local Council, NSW RFS, Blue ARC



H-NV ARC – Activities

Horse Care & Safety Open Day

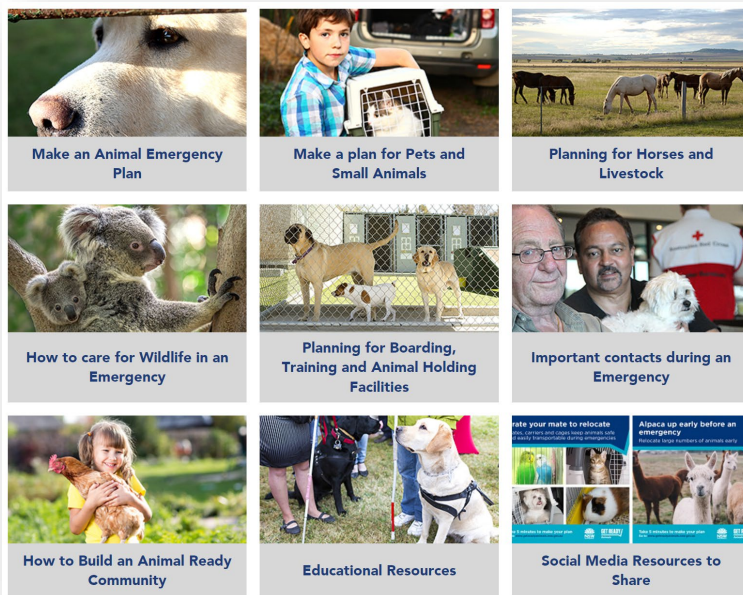
- Focus on care of horses and horse behaviour – with consistent emergency preparedness messages
- Mix of stalls and events in arena.



HNV ARC – Activities

Resources

- content and videos hosted by NSW SES (Get Ready Animals) website – linked/added to 'Ohana' project outputs
- working towards supported preparedness training



Thank you

Questions

mel.taylor@mq.edu.au

mel.taylor@endringadvantage.com.au

